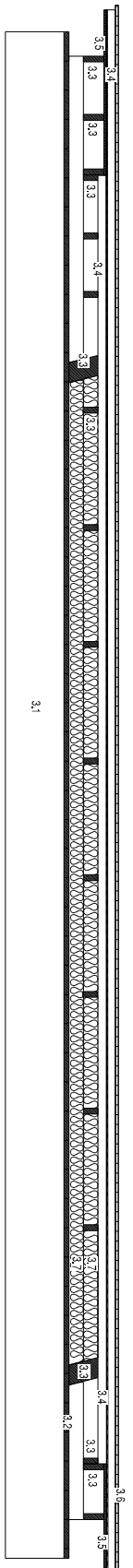
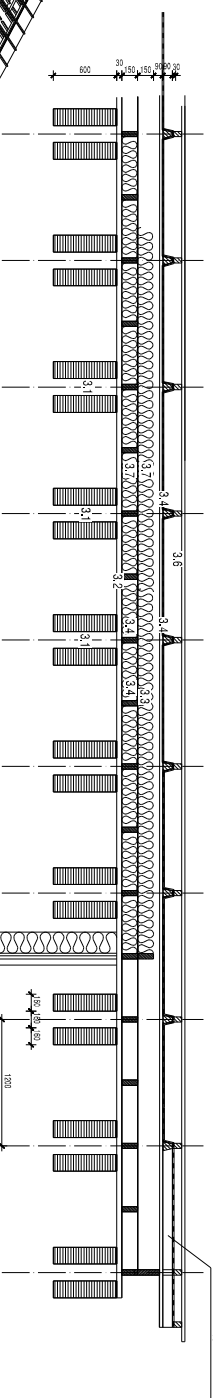


COMPLEXE DE TOITURE
coupe transversale 1/25

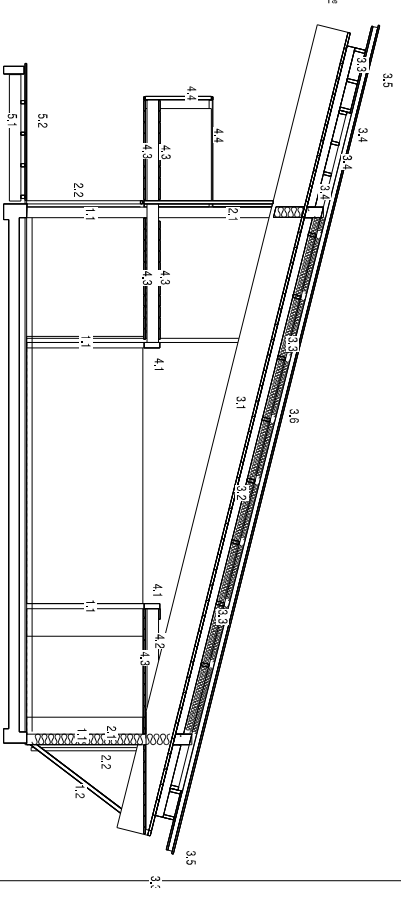


STRUCTURE SECONDAIRE TOITURE



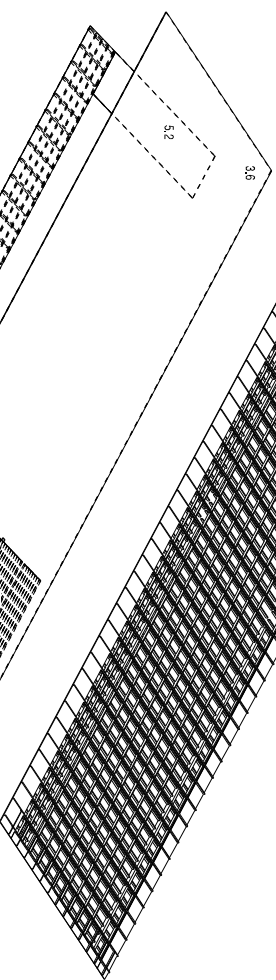
COMPLEXE DE TOITURE
coupe longitudinale 1/25

ATTENTION: en cas de vent, le système des bords

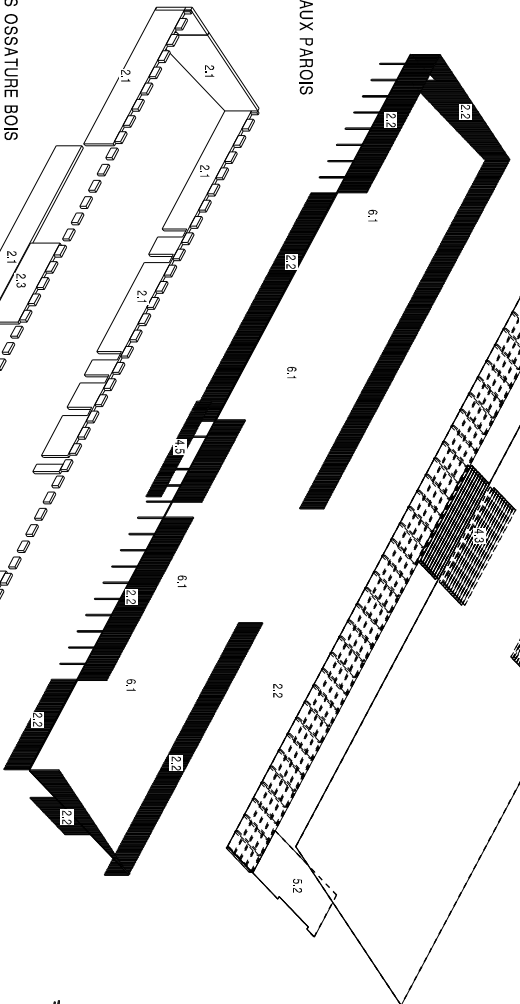


COUPE 1/50

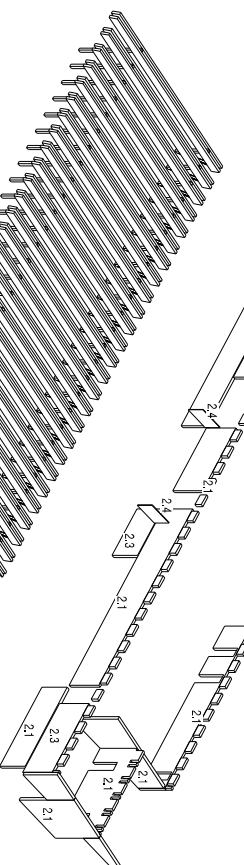
VOLIGE
PLATELAGES / ENTREE
CALLEBOTS



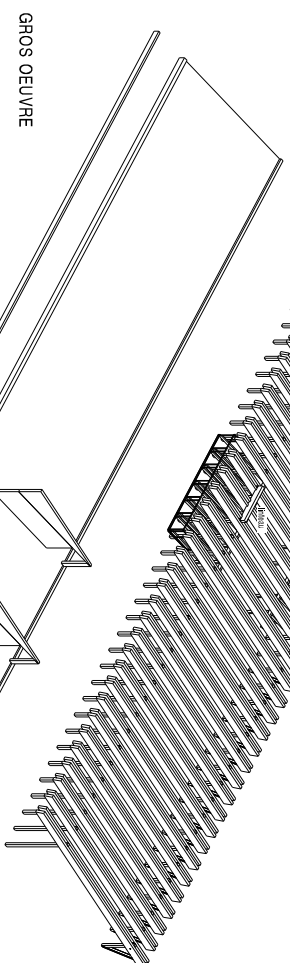
TASSEAUX PAROIS



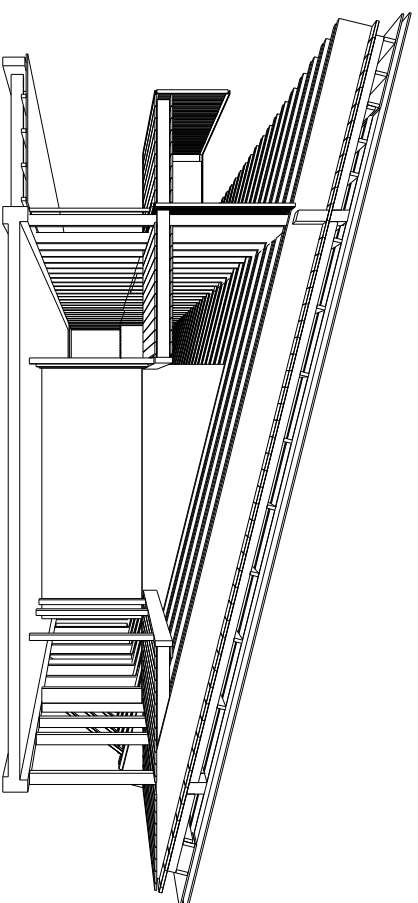
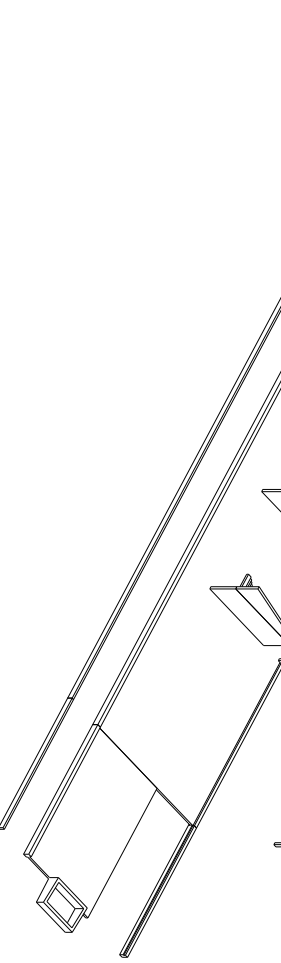
PAROIS OSSATURE BOIS



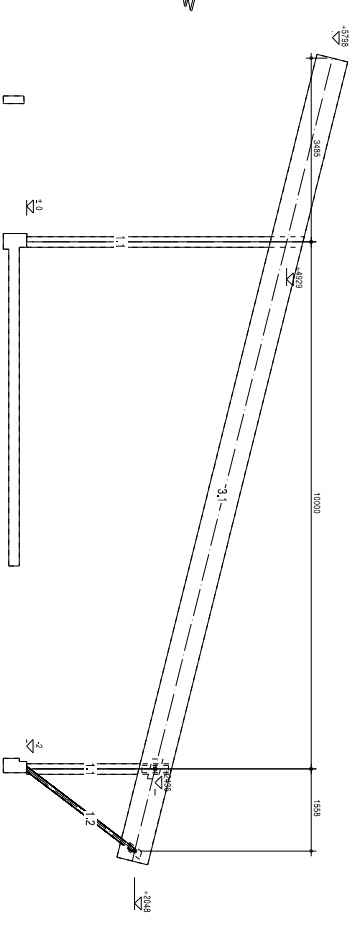
STRUCTURE PRIMAIRE



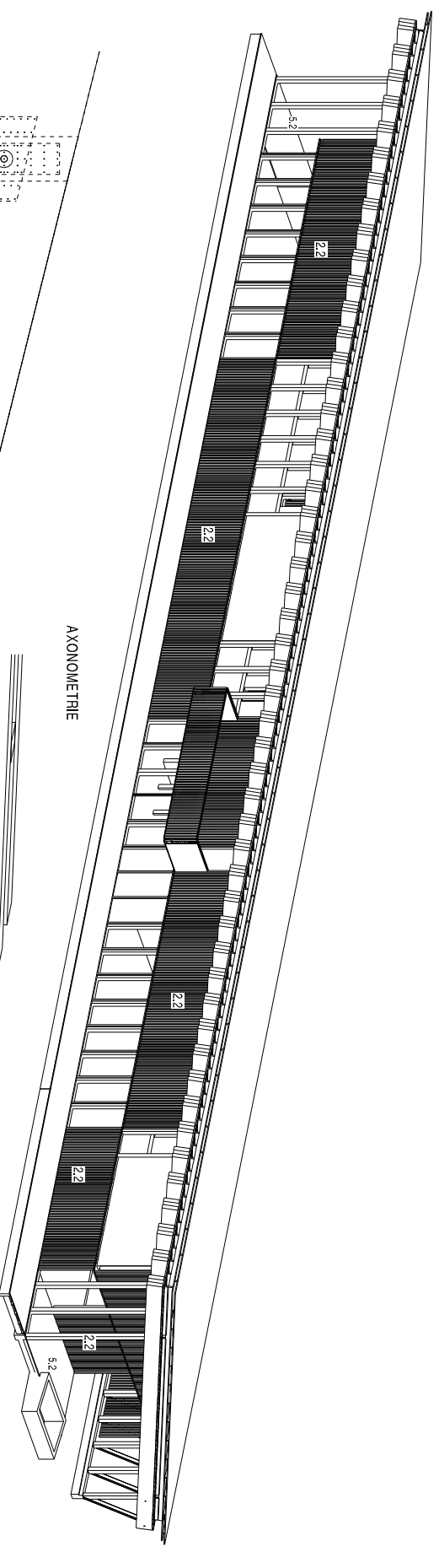
GROS OEUVRE



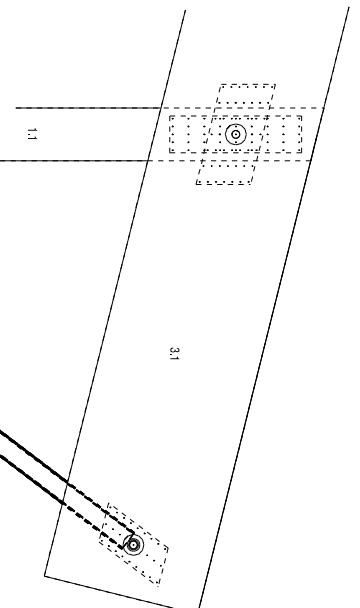
PERSPECTIVE SUR COUPE



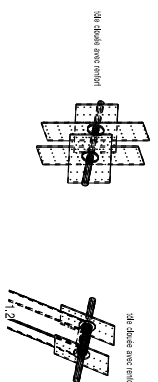
EPURE 1/50



AXONOMETRIE



APPU BAS : DETAIL 1/10



- 1.1 poteaux primaires BM 150/200
- 1.2 boeufs nord 150/50/5 - 3 pl. mélèze
- 2.1 poutres isolées en bois (60/60) : Asphège
- 2.2 poutres isolées en bois (60/60) : Asphège
- 2.3 poutres primaires BLC 2 x 150/600 : lineaux BLC 200/450
- 3.1 platond bois 30 mm M1
- 3.2 pannes BM divers
- 3.3 chevrons et tasseaux BM divers
- 3.4 pannes 3 pl. mélèze en toiture
- 3.5 poutres BM divers
- 3.6 isolation thermique 150x150
- 3.7 isolation thermique 150x150
- 4.1 solives mezzanine BM 80/200
- 4.2 solives mezzanine BM 80/200
- 4.3 garde-corps de balcon : mezzanine 30 mm mélèze
- 4.4 garde-corps de balcon : métal
- 4.5 solivage du dalle bois 21, IV
- 5.1 dalle bois 21, IV
- 5.2 solivage métal 50 mm

PROFANEUR	
ESPACE NOBILIOUE	CHAPPENTE BOIS : DCE
axonométrie coupes 1/50 et 1/25	
ESPACE NOBILIOUE	CHAPPENTE BOIS : DCE
axonométrie coupes 1/50 et 1/25	
ESP. 1/50, 1/25	PROFILAGE
PROFILAGE	ESP. 1/50, 1/25
PROFILAGE	ESP. 1/50, 1/25
PROFILAGE	ESP. 1/50, 1/25