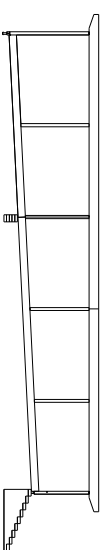
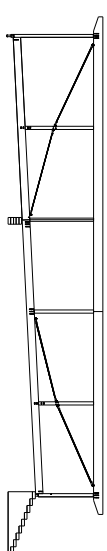


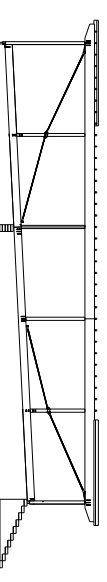
MONTAGE 1 :
SALON EUROBOIS A LYON
 4 jours à définir au début mars 2005 (mercredi à samedi inclus)



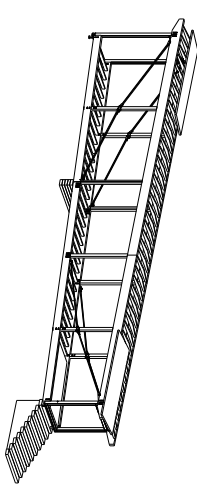
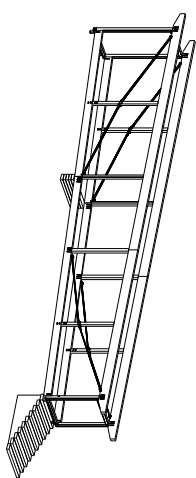
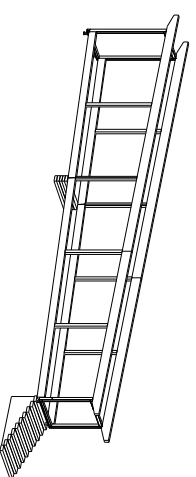
structure primaire



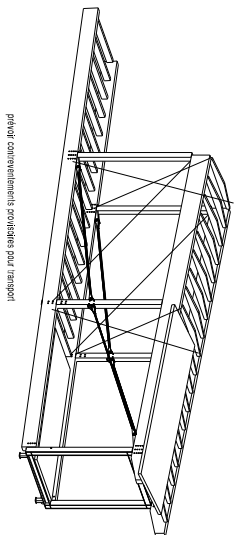
trants



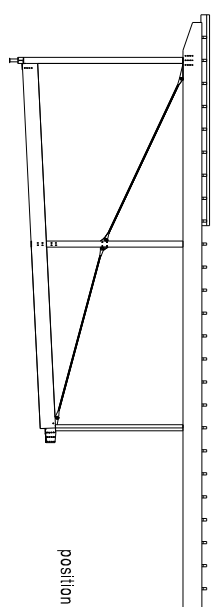
solivages et panneaux (partiels)



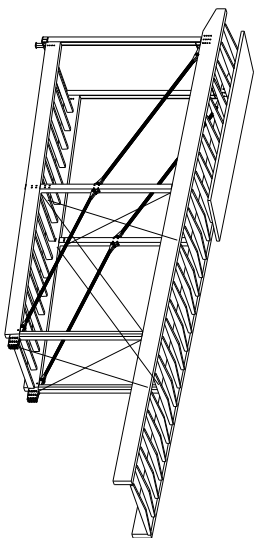
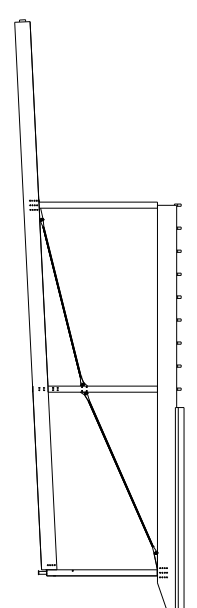
**TRANSPORT A MARIAC
 EN DEUX TRONCONS**



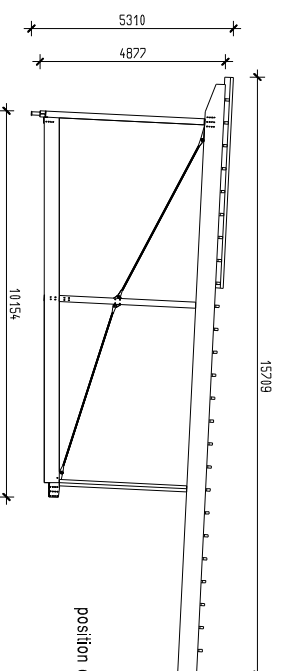
plancher commentements protégés pour transport



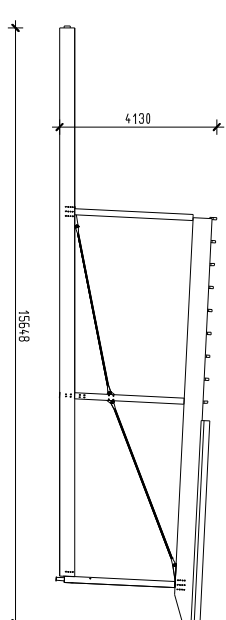
position au montage



plancher commentements protégés pour transport



position en transport

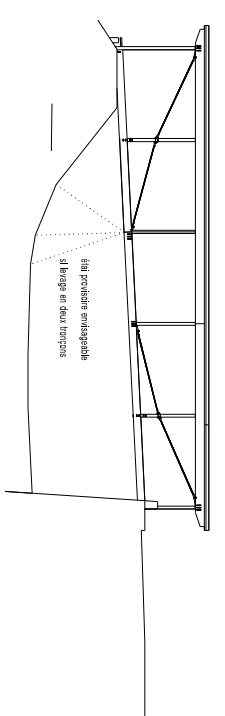
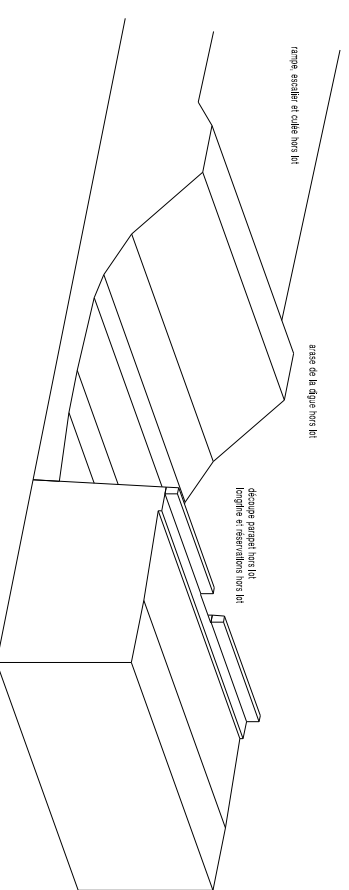
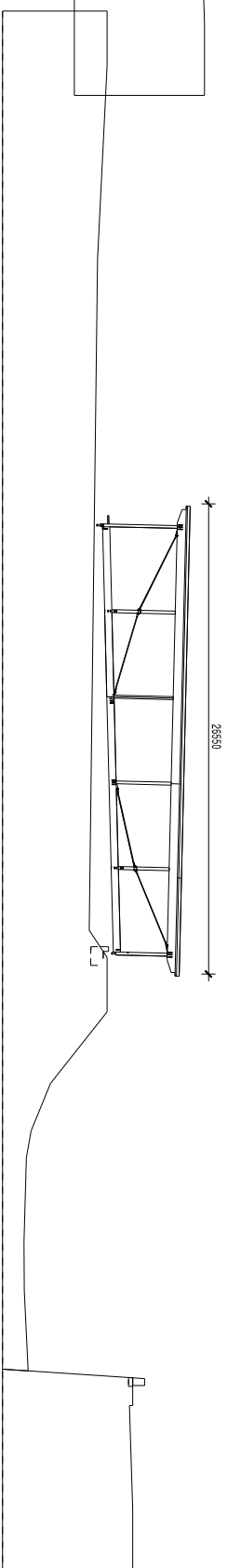
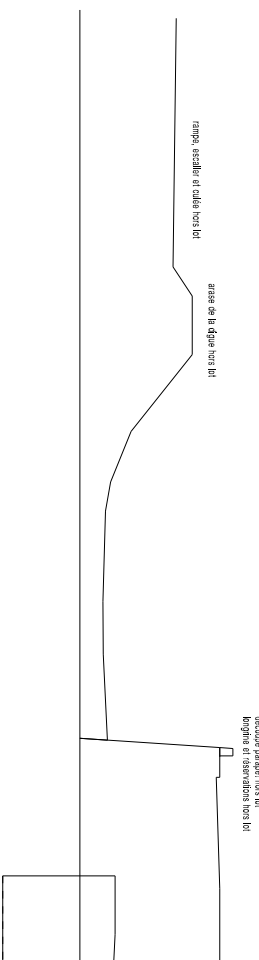


PREPARATION SUR SITE (hors lot)

LEVAGE EN UN OU DEUX TRONCONS

Transposable à tous sillons pour proposer le mode de levage de son choix.

place rive droite accessible et dégagée



ANGLADE STRUCTURES BOIS
 22 rue LAMARTINE
 66000 PORT-VENDESRES
 0464.48.98.07.12
 fax:04.68.98.07.13

VILLE DE MARIAC (07)
 PASSERELLE PIETONNE
 STRUCTURE BOIS : DCE
 MONTAGES 1 ET 2

ECH. : 1/200, 1/100
 PORT-VENDESRES 12.09.04

STB 04a